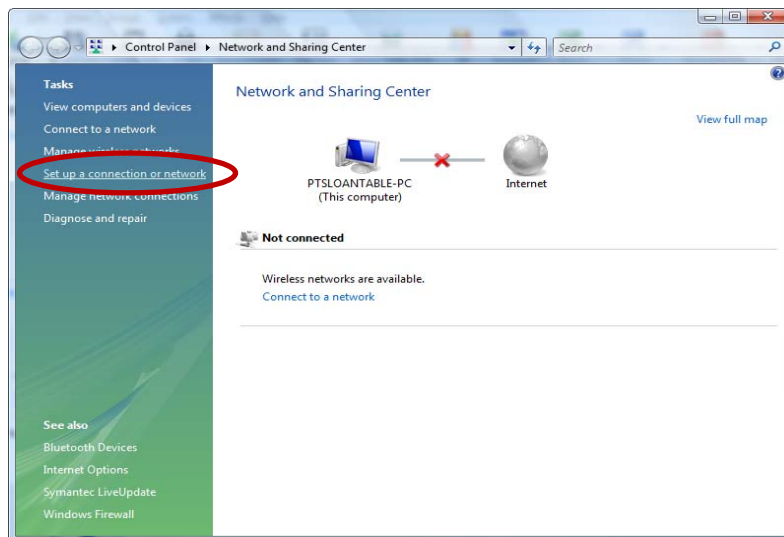


## Configuring Microsoft Windows 7 for WPA2 Enterprise

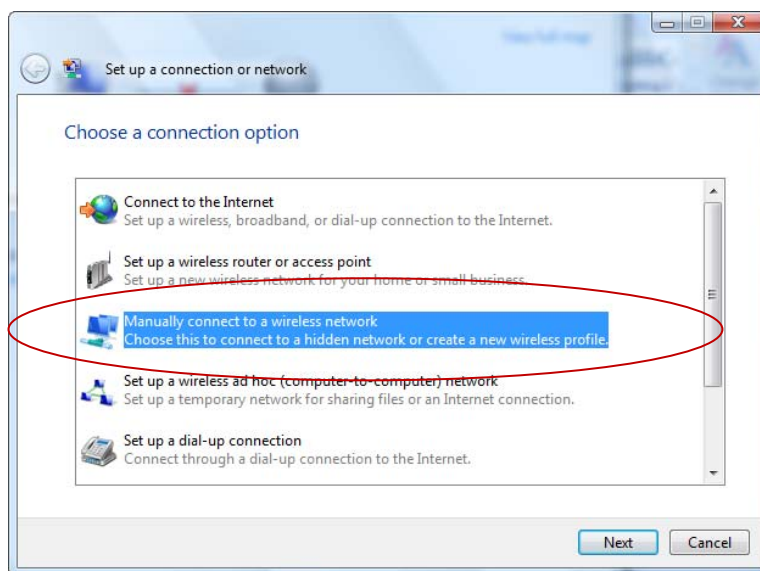
1. Right click on the wireless connection symbol in the lower right corner of the desktop and select **Open Network and Sharing Center**.



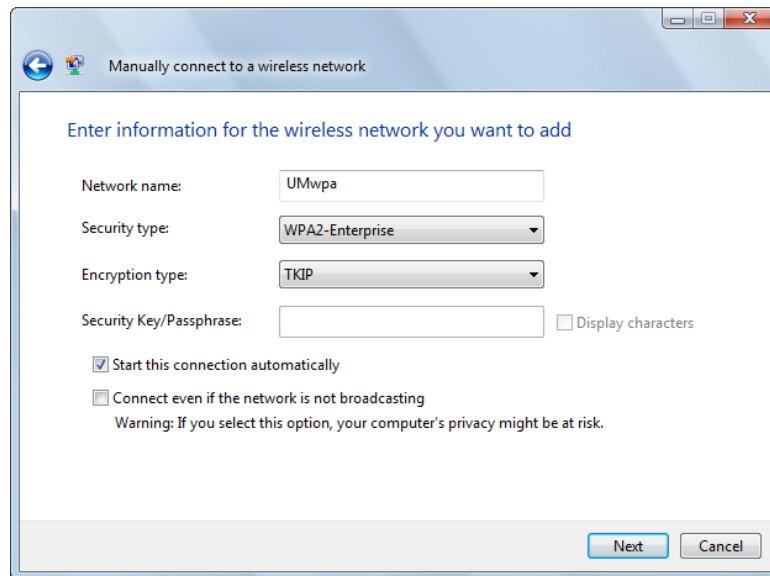
2. On the next screen, click **Set up a connection or network**.



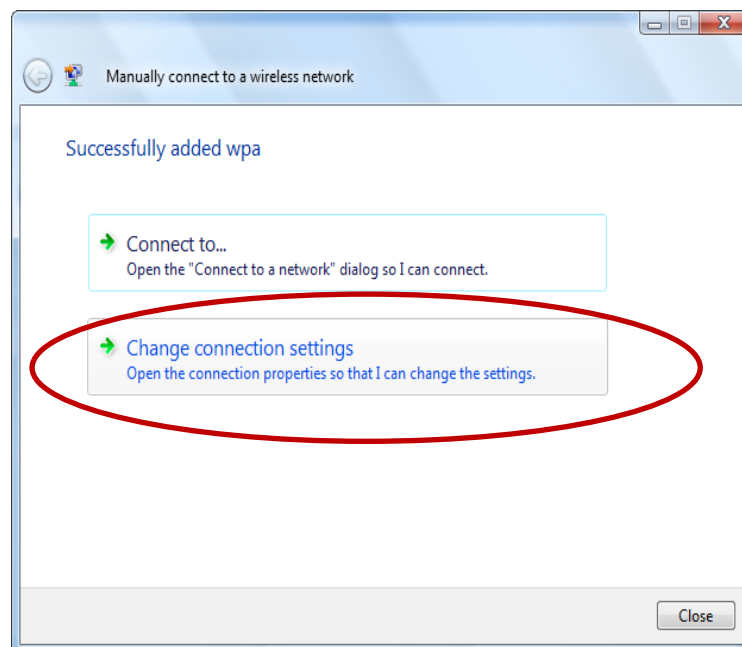
3. From the **Set up a connection or network** window, select **Manually connect to a wireless network**. Click **Next**.



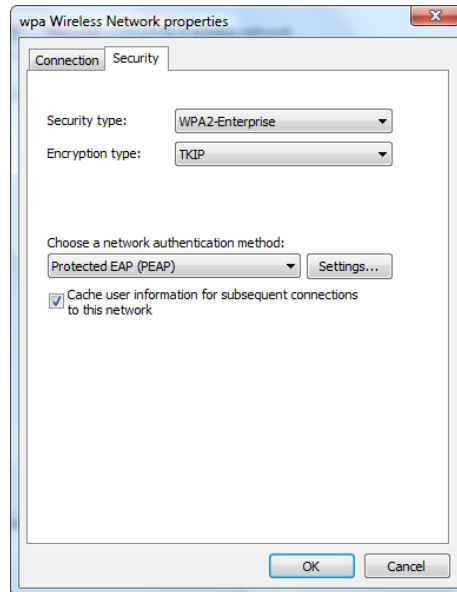
4. In the **Manually connect to a wireless network** window, enter the following:
  - a. Network name: **UMwpa**
  - b. Security type: **WPA2-Enterprise** (if available - otherwise **WPA Enterprise**)
  - c. Encryption type: **TKIP**
  - d. Confirm that **Start this connection automatically** is checked.
  - e. Click **Next**.



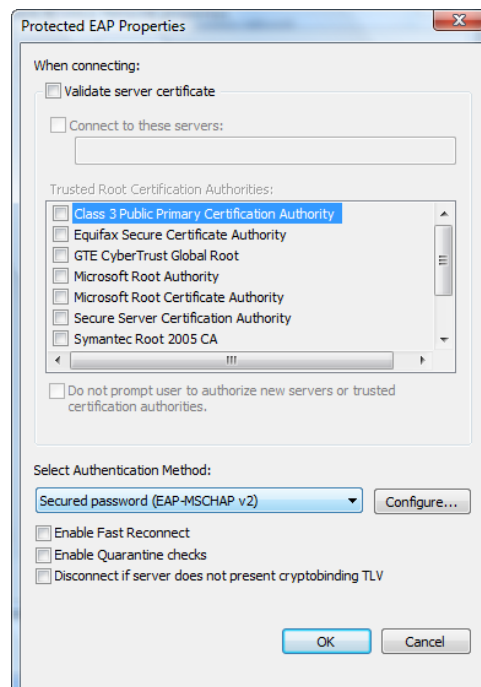
5. A second **Manually connect to a wireless network** window displays indicating that you have successfully added wpa. Click **Change connection setting**.



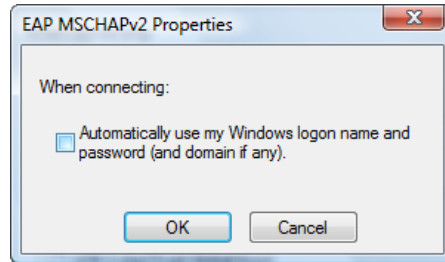
6. A **wpa Wireless Network properties** window displays. Click on the **Security** tab and verify that the following are selected:
  - a. Security type: **WPA2-Enterprise**
  - b. Encryption type: **TKIP**
  - c. Under Choose a network authentication method select **Protected EAP (PEAP)**
  - d. Also verify that **Cache user information for subsequent connections to this network** is checked.
  - e. Click on the **Settings** tab.



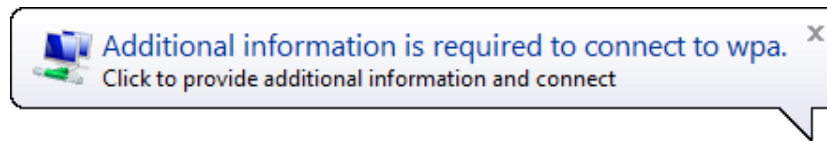
7. A **Protected EAP Properties** window displays.
  - a. Uncheck **Validate server certificate**.
  - b. Uncheck **Enable Fast Reconnect**, **Enable Quarantine checks**, and **Disconnect if server does not present cryptobinding TLV**.
  - c. Under **Select Authentication Method**, verify that **Secured password (EAP-MSCHAP v2)** is selected.
  - d. Click **Configure**.



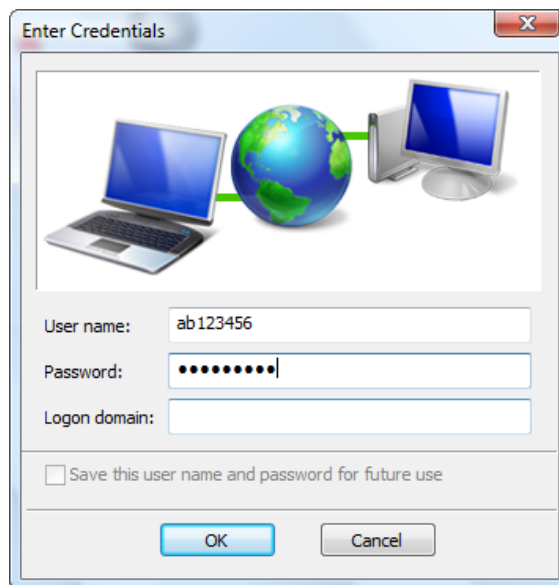
8. An **EAP MSCHAPv2 Properties** window displays.
  - a. Uncheck **Automatically use my Windows logon name and password.**
  - b. Click **OK.**
  - c. Close out of all remaining dialog boxes by clicking **OK** or Close.



9. If you have successfully completed this process an alert will display from your system tray (next to the time display on your task bar). Click inside the alert to validate your credentials.



10. In the **Enter Credentials** window, enter your **User name** (NetID) and **Password**. Do not enter a Logon domain. Click **OK**.



11. At any time, you may hover over the wireless connection icon located in your system tray to verify that you are connected.

